

Name \_\_\_\_\_ Period/Date \_\_\_\_\_

## Activity 31

### Exploring Positive and Negative Space

Write your team members' names beside their roles.

Name	Role	How each person helped our team learn
	Time Manager	
	Consensus Checker	
	Spokesperson	
	Team Builder	
	Reader (volunteer)	

#### Content Learning Objective

I can **identify** the positive space and negative space portions of the composition in a variety of artworks.

#### Process Learning Objectives

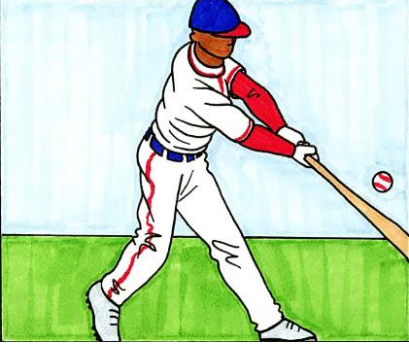


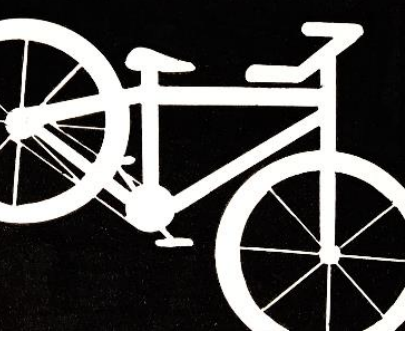


I can **observe closely** to analyze the important differences between two similar visual graphics.

I can **discuss** and then write a team consensus answer.

*As you work through the following questions,  
be sure to follow your team role(s).*



## Model 31 – Positive and Negative Space

Artwork	Including a Positive Space Subject and a Negative Space Background	Including Only the Negative Space Background
A		
B		
C		

### Consensus Checker:

Make sure everyone reaches agreement before writing down your team's consensus answers.

1. **Highlight** the three headings in Model 31.

2. Draw a box around all the artworks that include **only the negative space background**. Discuss with your team. What color represents negative space in these compositions?

- a. Black                      b. Solid colors                      c. A mix of colors                      d. White

3. Look closely at the version of Artwork A that includes a positive space subject and a negative space background.

a. Use a black marker to **color in** all the areas of this artwork that do not include the main subject of the composition (the baseball player, bat, and ball).

b. **Compare** your coloring with the other version of Artwork A. Describe one similarity and one difference your team identifies.

4. Look closely at the pairs of artworks in Model 31. Discuss with your team. Use information from these pairs to complete the table below. Part of the table has been completed for you.

Artwork	What part of the artwork does the <b>positive space</b> include?	What part of the artwork does the <b>negative space</b> include?
<b>A</b>		The field and the sky (background)
<b>B</b>	The bicycle	
<b>C</b>		The table and wall (background)

5. Look at the print below. Use a black marker to color in all the areas of **negative space** in the artwork.

<https://tinyurl.com/EA31Q5>

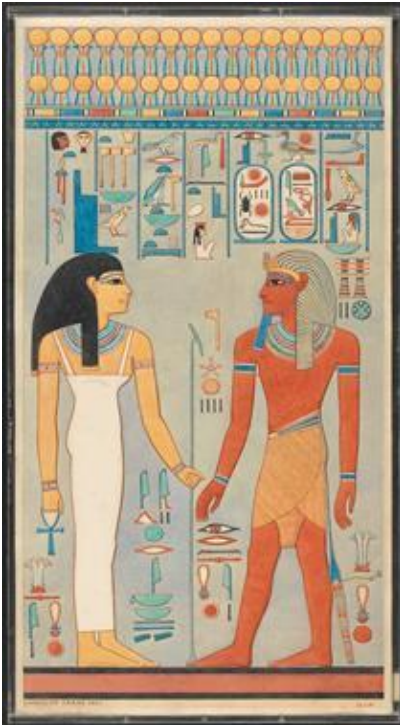
“The Hired Baby”

Helen Hyde (1909)

Image courtesy of si.edu



6. Look at the two artworks below. Label **one area of positive space** and **one area of negative space** in each artwork.



<https://tinyurl.com/EA31Q6-1>

“The King with Isis, Tomb of Haremhab”

Unknown Egyptian Artist

(c. 1300 BCE)

Image courtesy of The MET



<https://tinyurl.com/EA31Q6-2>

“Bird on Branch Watching Spider”

Watanabe Seitei

(c. 1887)

Image courtesy of The MET

7. Some artists create compositions that use only negative space and leave the positive space blank.



- a. **Manager:** Ask each team member to open one of these links for all to see.
- b. **Circle** the two artworks that use only negative space in their composition.

Title of Artwork	Artist (Year)	Link to view the artwork
Missing Link 1	Sašo Vrabič (2014)	<a href="https://tinyurl.com/EA31Q7b1">https://tinyurl.com/EA31Q7b1</a>
The Sisters Zénaïde and Charlotte Bonaparte	Kehinde Wiley (2018)	<a href="https://tinyurl.com/EA31Q7b2">https://tinyurl.com/EA31Q7b2</a>
Broom Crew from the Garden Party	Barrington Watson (1976)	<a href="https://tinyurl.com/EA31Q7b3">https://tinyurl.com/EA31Q7b3</a>
Untitled (Double Rauschenberg)	Robert Rauschenberg (1950)	<a href="https://tinyurl.com/EA31Q7b4">https://tinyurl.com/EA31Q7b4</a>

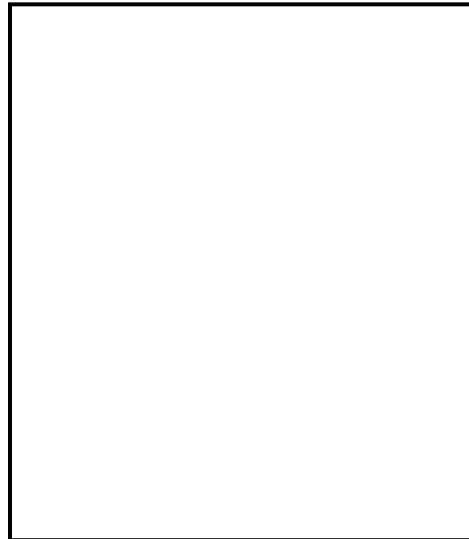


**Spokesperson:**

Check your team’s answers for question 7 with two other teams before you continue.

8. Let’s explore positive and negative space.

- a. Work by yourself to create a simple drawing of a person, animal, or object in the box. Spend no more than two minutes on your drawing.
- b. **Trade** your drawing with a teammate.
- c. **Label** one area of positive space and one area of negative space on your teammate’s drawing.
- d. Do your labels match your teammate’s ideas?



**Team Builder:** Lead a short discussion with your team.

Add a note beside each name on page 321 to show “how each person helped our team learn.”

## Credits

### Activity 31

#### Question 5

“The Hired Baby”, Helen Hyde, 1909. Smithsonian American Art Museum, Gift of Hyde Gillette in memory of Mabel Hyde Gillette and Edwin Fraser Gillette

[https://www.si.edu/object/hired-baby:saam\\_1992.13.57](https://www.si.edu/object/hired-baby:saam_1992.13.57)

#### Question 6

“The King with Isis, Tomb of Haremhab”, Unknown artist, c. 1300 BCE. The Metropolitan Museum of Art, New York: Rogers Fund, 1923

<https://www.metmuseum.org/art/collection/search/557794?sortBy=Relevance&ao=on&showOnly=openAccess&ft=haremhab&offset=0&rpp=40&pos=5>

“Bird on Branch Watching Spider”, Watanabe Seitei, c. 1887. The Metropolitan Museum of Art, New York: Charles Stewart Smith Collection, Gift of Mrs. Charles Stewart Smith, Charles Stewart Smith Jr., and Howard Caswell Smith, in memory of Charles Stewart Smith, 1914

<https://www.metmuseum.org/art/collection/search/54673?sortBy=Relevance&ao=on&showOnly=openAccess&ft=Watanabe+Seitei&offset=0&rpp=40&pos=6>

#### Question 7

“Missing Link 1”, Sašo Vrabič, 2014.

<https://uploads5.wikiart.org/00212/images/vrabic/manjkajo-i-len-1-2004-4-slike-50-x-70-cm-privatne-zbirke-slovenija.JPG!Large.JPG>

“The Sisters Zénaïde and Charlotte Bonaparte”, Kehinde Wiley, 2018.

[https://www.brooklynmuseum.org/assets/system-images/made/assets/systemimages/remote/https\\_d1lfxha3ugu3d4.cloudfront.net/exhibitions/images/2015\\_Kehinde\\_Wiley\\_EL137.63\\_3082W\\_600\\_801.jpg](https://www.brooklynmuseum.org/assets/system-images/made/assets/systemimages/remote/https_d1lfxha3ugu3d4.cloudfront.net/exhibitions/images/2015_Kehinde_Wiley_EL137.63_3082W_600_801.jpg)

“Broom Crew from the Garden Party”, Barrington Watson, 1976.

<https://uploads7.wikiart.org/images/barrington-watson/broom-crew-from-the-gardenparty-1976.jpg>

“Untitled (Double Rauschenberg)”, Robert Rauschenberg, 1950.

<https://uploads8.wikiart.org/00238/images/>